

# FERMAX

**VDS**  
TECHNOLOGY



Cable CAT5

A digital system that combines Fermax world class styling  
with a simple one cable CAT5 installation

**A winning  
combination!**

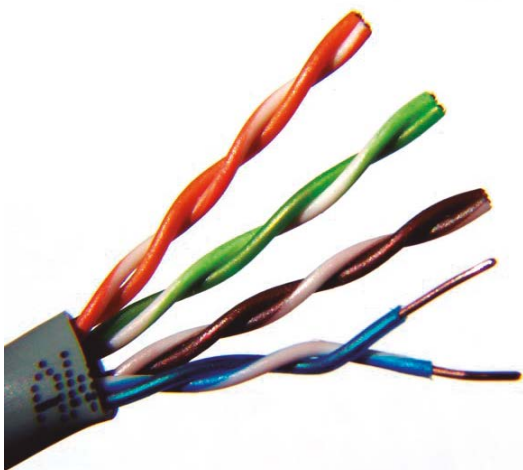


# VDS

# TECHNOLOGY

Get a competitive advantage on your everyday installations with FERMAX **VDS TECHNOLOGY**:

## A high-performance technology at a cost-effective price



Category 5 Cable, commonly known as CAT5, is a twisted pair cable type (4 pairs AWG24 - 0.205 mm<sup>2</sup> cross-section per single wire) designed for high signal integrity.

This **one cable solution** works perfectly with Fermax **VDS technology**, making your intercom system installations **so much easier and quicker**.

Save time and money on your intercom system installation. Just use a stylish Fermax monitor with one CAT 5 cable.

**FERMAX**



# VDS RANGE OF PANELS AND TERMINALS for any taste, for any need!

## Outside



Skyline



Marine

### Skyline Panel

SKYLINE is the perfect door entry panel for contemporary installations that requires multiple integration systems: information, communication and access control.

It's modular design and versatility provide TOTAL CREATIVE FREEDOM to create any imaginable combination.

### Marine Panel

Marine panel is a vandal-proof door-entry system made in stainless steel (2,5mm-thick). (IP 54 IK 09). AISI 316L type of stainless steel.



## Inside

### Smile

**Top-end** style and functionality.



7" Smile Monitor



3,5" Smile Monitor

### iLoft Pure

Handsfree solution at a cost-effective price



iLoft Pure Monitor



iLoft Telephone

### Loft

Classic style with economy



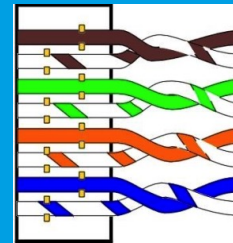
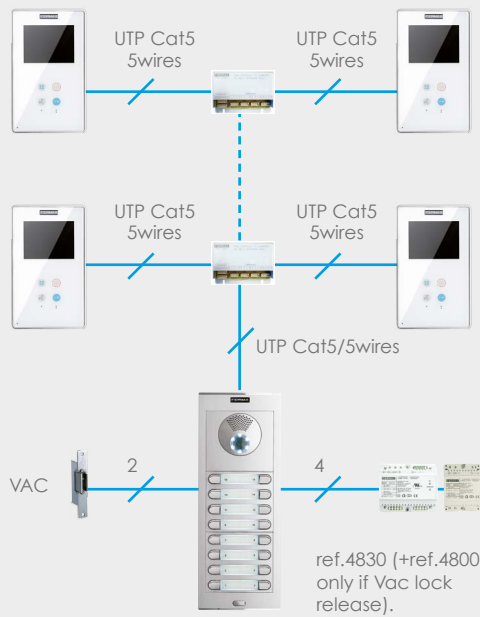
Loft Monitor



Loft Telephone



## Basic VDS video diagram working on CAT5



## Tender Specs VDS with CAT5

	Audio	Video Colour
Single Riser	<p>Maximum number of telephone: 120. Maximum distance from the panel to the furthest telephone: 120m. 1 x ref.4830 (18 Vdc/3,5A) every 50 telephone. 1 x ref.4812 (18Vdc/2A) for the outdoor panels.</p>	<p>Maximum number of monitors: 80. Maximum distance from the panel to the furthest monitor: 100m. 1 x ref.4830 (18 Vdc/3,5A) every 24 monitors. 1 x ref.4812 (18Vdc/2A) for the outdoor panels.</p>
Multiriser	<p>Maximum number of risers: 3 x 50 telephones each. Maximum distance from the panel to the furthest telephone: 100m. 1 x ref.4830 (18 Vdc/3,5A) every 50 telephone. 1 x ref.4812 (18Vdc/2A) for the outdoor panels.</p>	<p>Maximum number of risers: 2 x 40 monitors each. Maximum distance from the panel to the furthest monitor: 100m. 1 x ref.4830 (18 Vdc/3,5A) every 24 monitors. 1 x ref.4812 (18Vdc/2A) for the outdoor panels.</p>
Wiring Connection	<p>One pair fro +. One pair for -. One wire of a pair fro L.</p>	<p>One pair fro +. One pair plus one wire for -. One wire of a pair fro L. One pair for the video signal V and M.</p>

For bigger installations, you can upgrade your installation combining MDS & VDS technologies.

See VDS technical manual for more info.