

KEYSINGLE

KEYSINGLE transmitters offer all the advantages of Fermax transmitters as well as being programmable, allowing complete control of the receptor.

Characteristics such as APS, ever-changing security codes and management through a PC give great added value to this family of transmitters.



Applicable to Roller Doors · Overhead · Sliding · Swinging · Sectional · Vertical Elevation · Fast · Crystal · Barriers · Revolving · Oversized

FERMAX

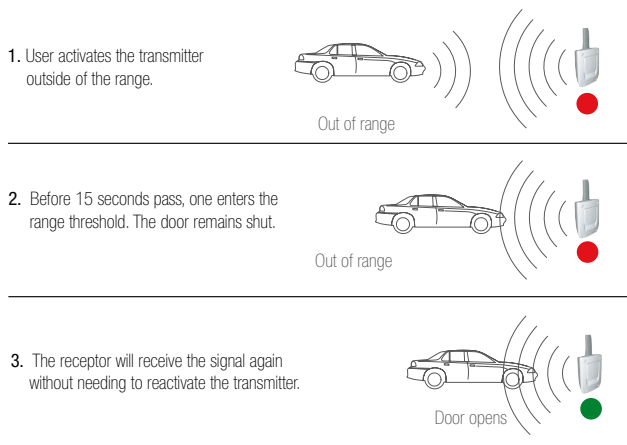
Programmable 868 MHz Transmitters

- Reliable.
- Secure.
- Easy to Program.
- Simple Installation Management.



Reliable

- With the APS (Approaching System) transmission system, one can activate the button on the transmitter whilst being outside of the receptor range. The transmitter will transmit the signal constantly until the user comes within range of the reader.



Security

- High security system of changing code with more encryption.

Ease of Programming

- Programming can be done remotely.

Simplified Installation Management

Through the programming tool UserPlus, one can:

- Access the data base of all equipment, transmitters and proximity cards delivered in every installation.
- Assign reservation codes.
- Sell functional transmitters, cards and tags without displacing the installation.
- Create new transmitters, cards or tags that have been lost or stolen.
- Use PIN codes; 1 code of 4 digits for a receptor and every proximity transmitter will need to have the same PIN in order to be programmed correctly. A transmitter can have 2 PINs
- Personalise the mechanisms with the installed code.
- Configure the parameters, such as prohibiting remote programming.

Transmitters



KEYSINGLE
MINI



KEYTRI
PLUS 2



KEYTRI
PLUS 4

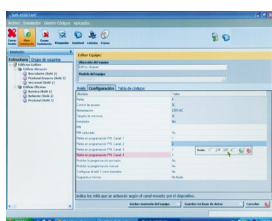
KEYSINGLE MINI · KEYTRI PLUS 2 · KEYTRI PLUS 4

- Programmable transmitters of 868 MHz, 2 or 4 channels.
- Range: 100 m.
- Supply: 3V dc battery type CR2032.
- Consumption: 12mA.
- Battery life: 2 years.
- Indicator lights for operations, low battery and transmitting signal.
- High security code, 19 trillion combinations.
- Serial number marked by laser.
- Functioning temperature: -20°C a + 55°C.
- Dimensions KEYSINGLE MINI: 55 x 30 x 10 mm.
- Dimensions KEYTRI PLUS: 68 x 36 x 14,4 mm.

Receptors

- BASIC
- PLUS
- EXTRA
- RF WIEGAND

Programming



SOFT UserPlus

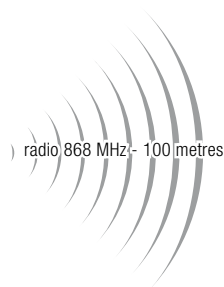


KEYTRI
PLUS 2

KEYTRI
PLUS 4



KEYSINGLE
MINI



radio 868 MHz - 100 metres



PLUS/EXTRA



BASIC/WIEGAND